

The CIDOC Conceptual Reference Model

A core-ontology for information integration

Karl H. Lampe, Zoologisches Forschungsmuseum Alexander Koenig (ZFMK)
Bonn/Germany

Christian-Emil Ore, University of Oslo, Norway / ICOM CIDOC



ICOM-CIDOC

The International Committee on Documentation

- 450 members worldwide
- 7 working group
 - Archaeological sites
 - CRM special interest group
 - Digital Preservation
 - Documentation standards
 - Information Centres
 - Natural history
 - Services

ICOM

International Council of Museums

- Initiated by UNESCO in 1946
- 22 000 members (> 3 000 museums) worldwide
- 30 international committees

The Conceptual Reference Model

CIDOC CRM

(cidoc.ics.forth.gr)

- 1995 - 2005
 - CIDOC Documentation Standards Working Group
 - CIDOC CRM Special Interest Group
 - 80 members (all institutional members)
 - Direct liaison with ISO

The CIDOC CRM

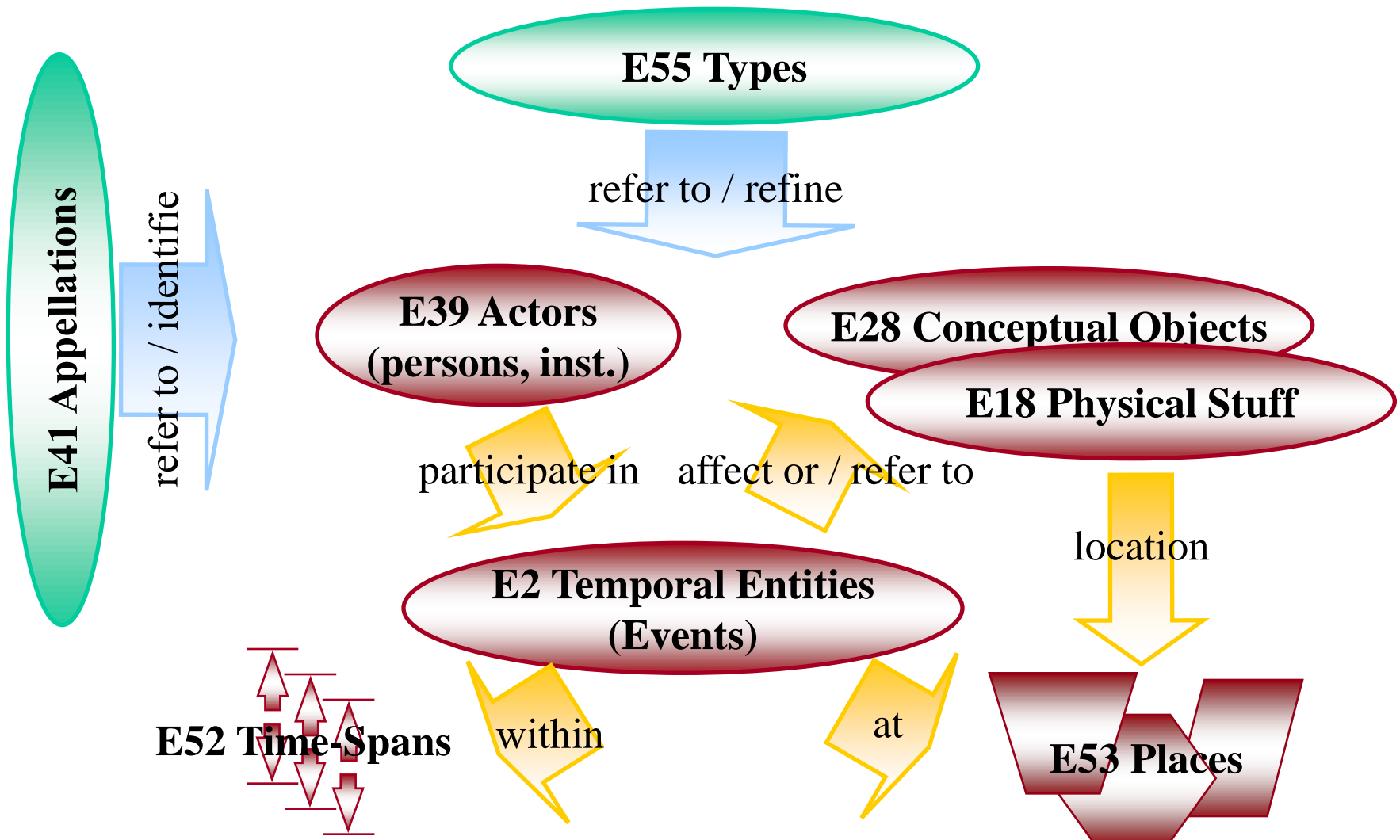
(cidoc.ics.forth.gr)

- What is the CIDOC Conceptual Reference Model?
 - An object oriented ontology of about 80 classes and 130 properties for cultural and natural history
 - CRM instances can be encoded in many forms: RDBMS, ooDBMS, XML, RDF(S), OWL.
 - Accepted as ISO-21127 in June 2005

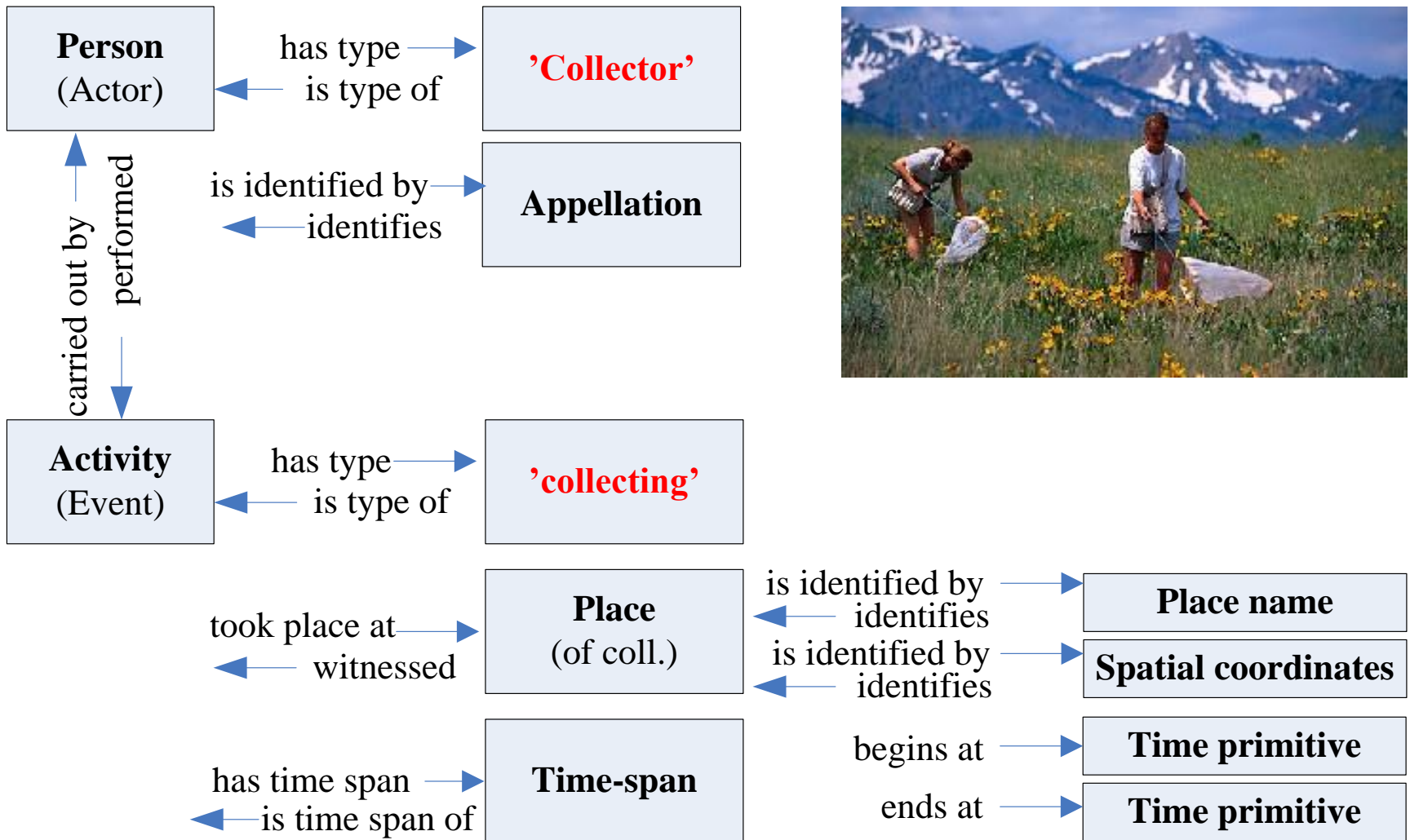
- What is the CIDOC Conceptual Reference Model for?
 - Intellectual guide to create schemata, formats, profiles
 - Best practice guide
 - A language for analysis of existing sources and models for data integration (mapping)
 - Transportation format for data integration / migration / Internet

The CIDOC CRM

Top-level Classes relevant for Integration

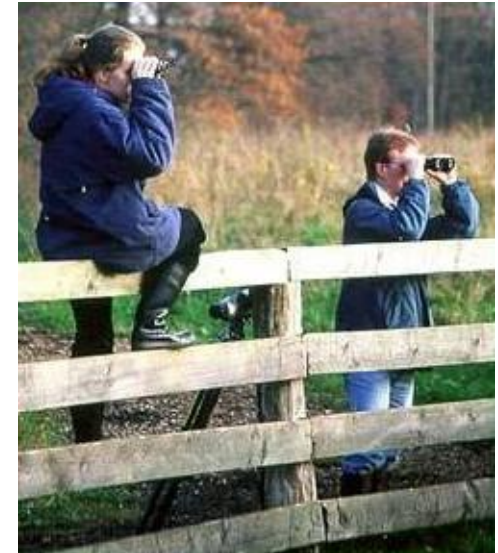
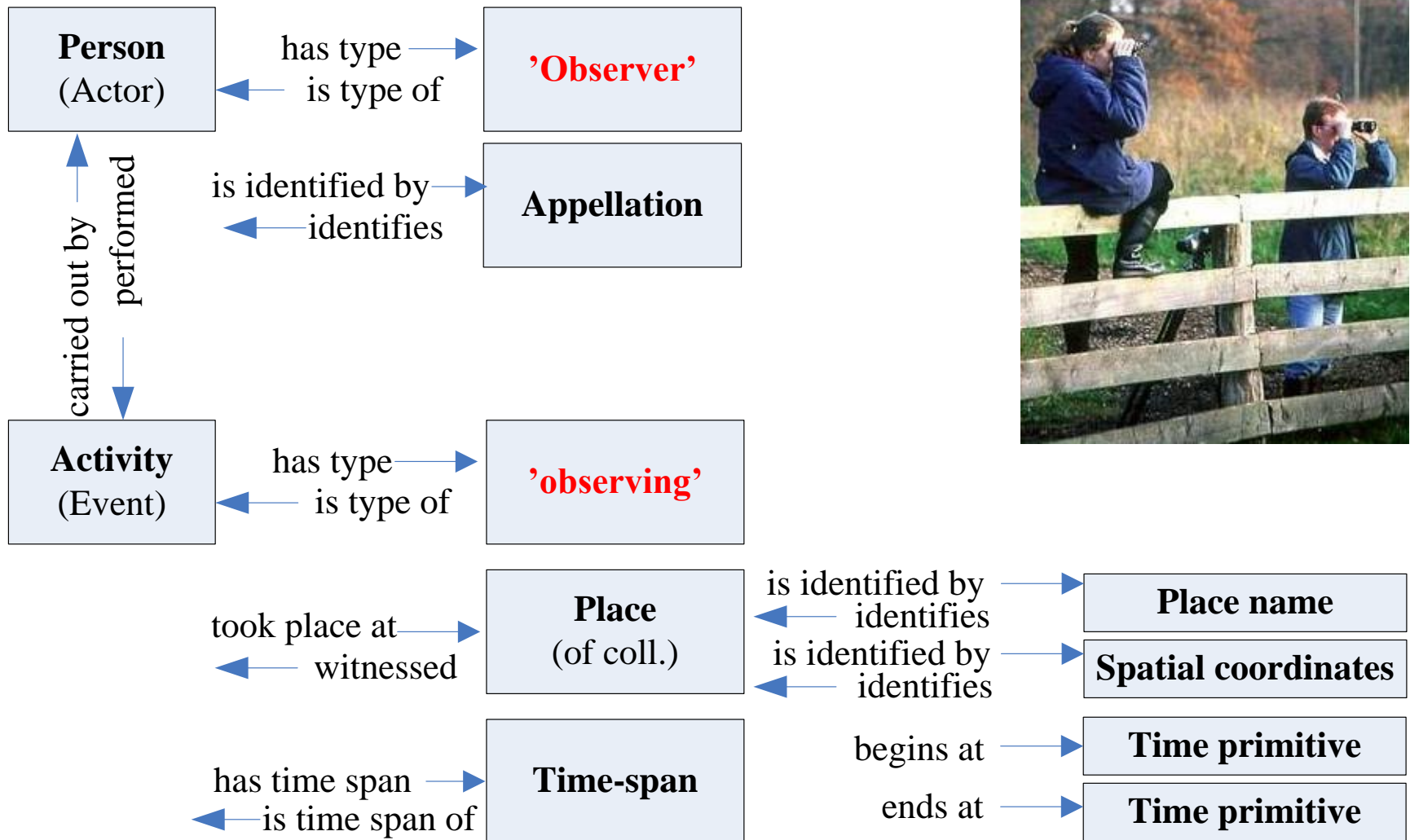


CIDOC CRM: Collecting events



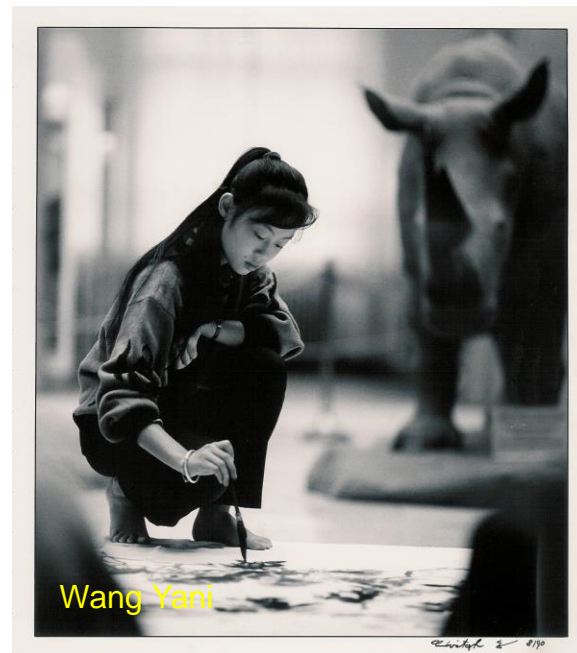
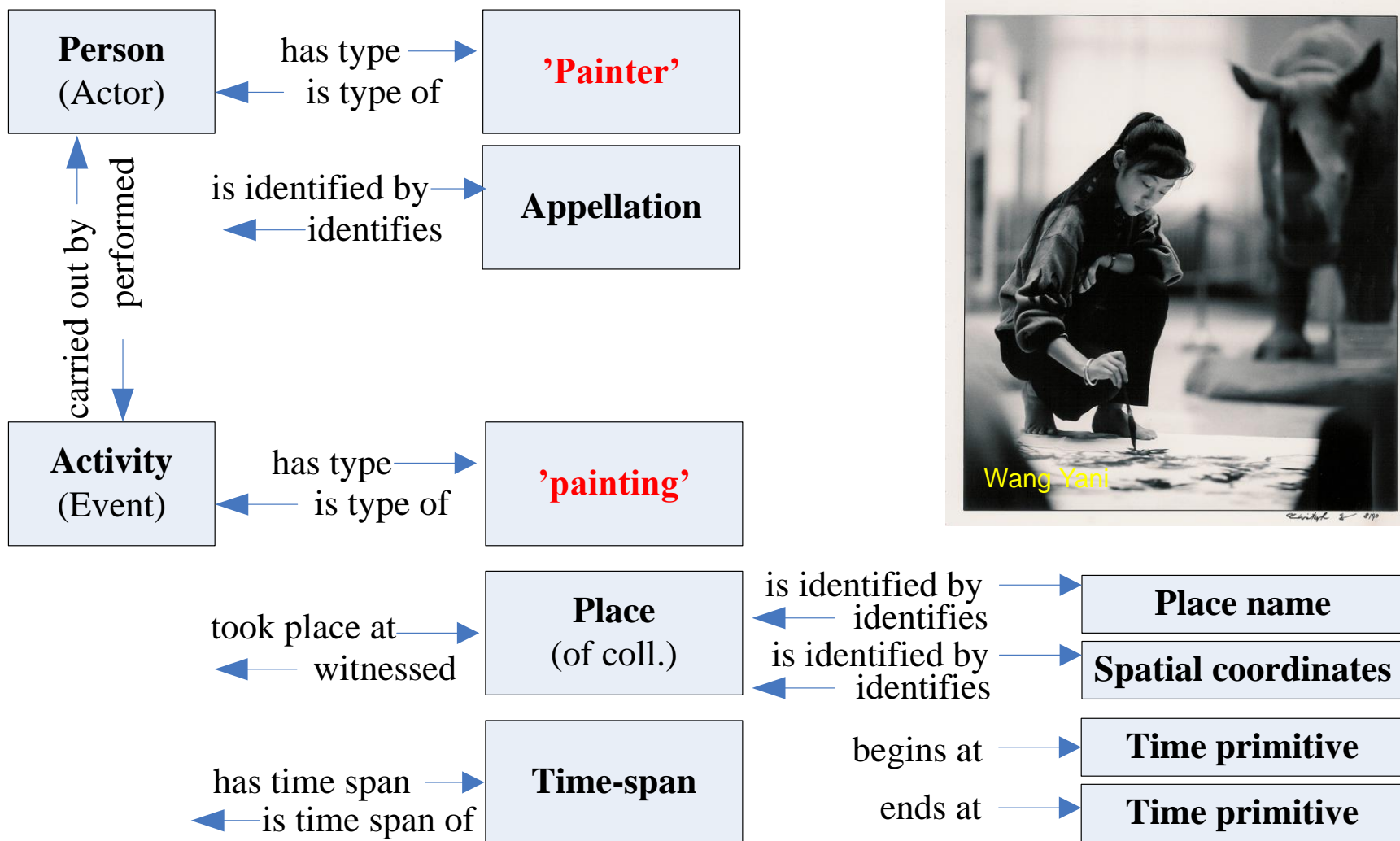
Note: Collecting events affect specimens (E20 Biological object)

CIDOC CRM: Observing events



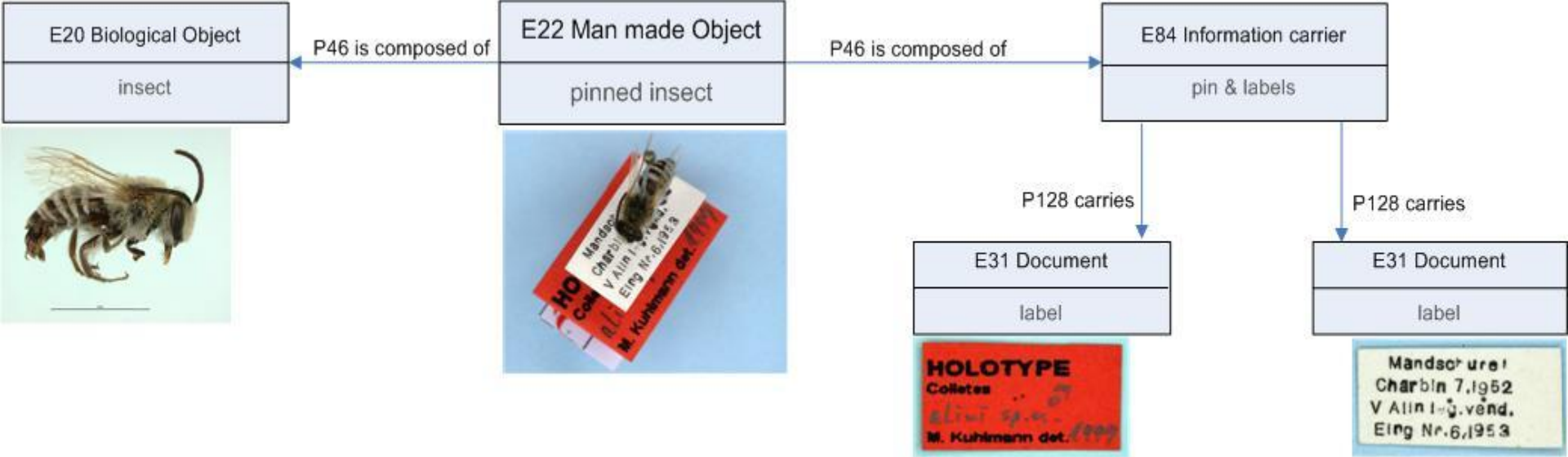
Note: Observing events are documented as diary notes, inventory lists etc (E31 document)

CIDOC CRM: **Painting** events

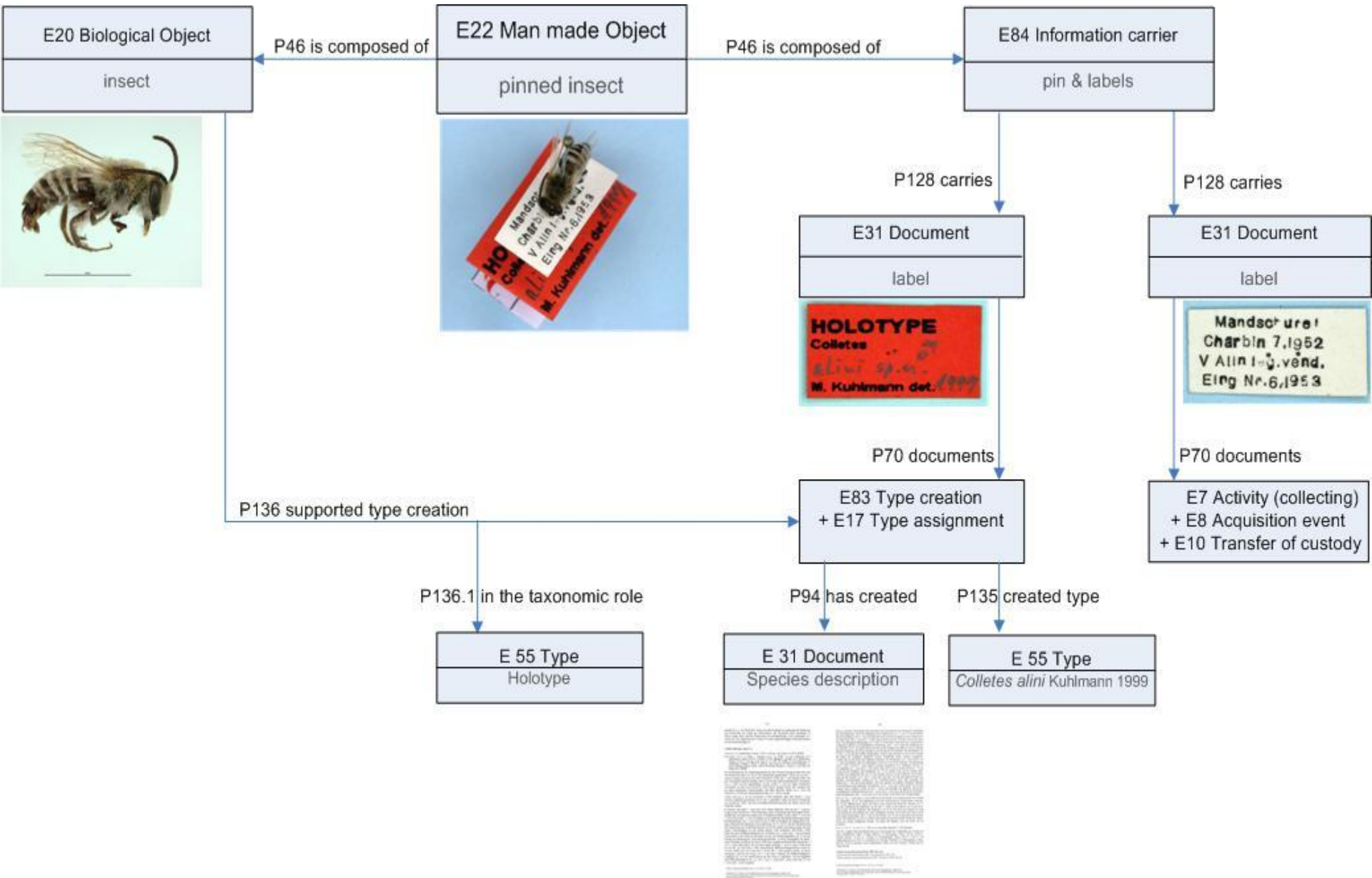


Note: Painting events create visual items (E73 Information object)

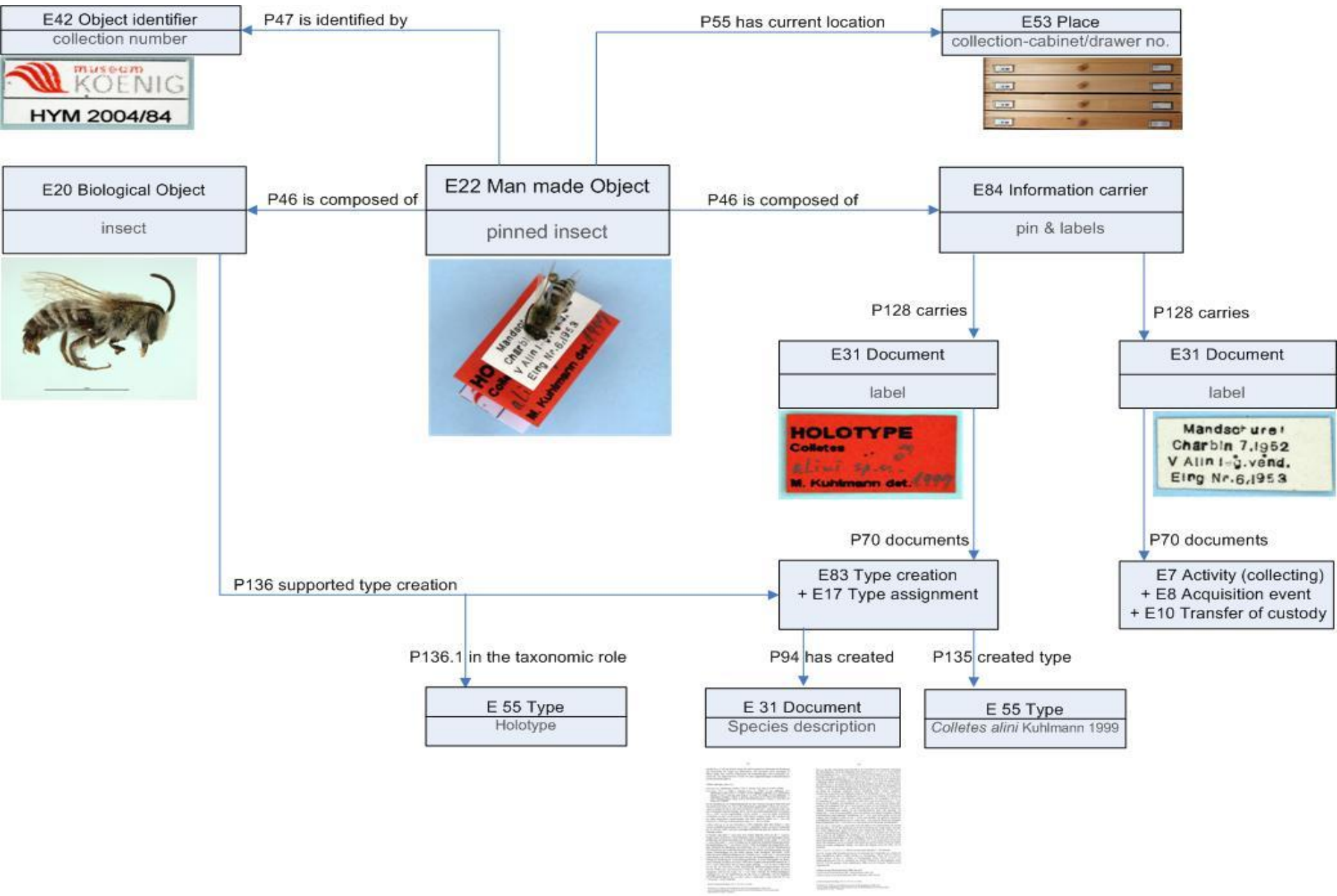
Scientific activity (Object documentation, collection management etc.)



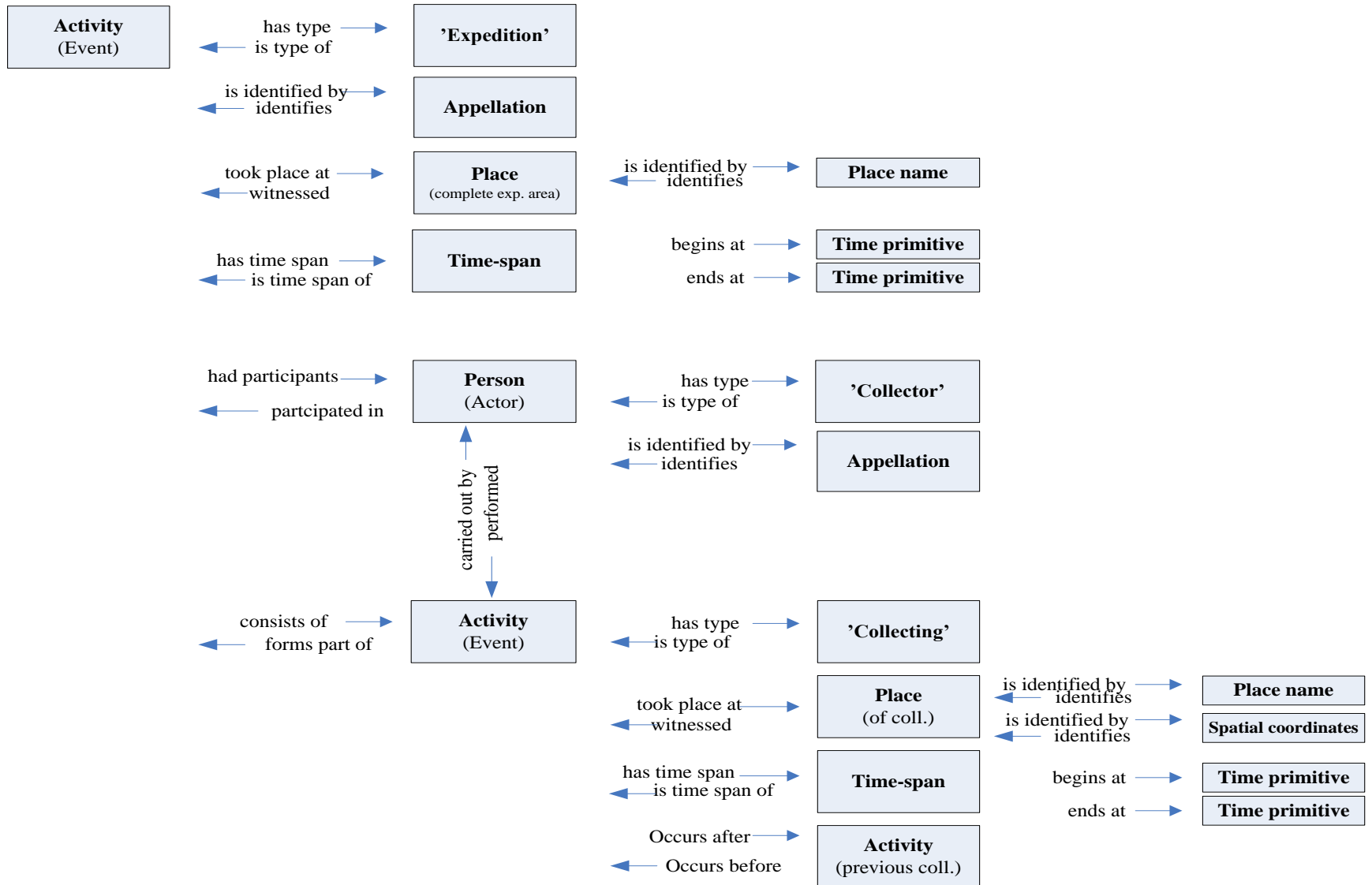
Scientific activity (Object documentation, collection management etc.)



Scientific activity (Object documentation, collection management etc.)



Collector's itineraries & expedition routes



Concluding remarks

CIDOC Natural History Working Group invites TDWG members to join current efforts in:

1. Mapping of domain specific events in terms of the CIDOC-CRM
2. Identifying of gaps within the CIDOC-CRM
3. Preparing necessary extension of the CIDOC-CRM

The next CIDOC conference will be in Gothenburg, Sweden, September 10-14, 2006

Contact address for CIDOC Natural History Working Group:
k.lampe.zfmk@uni-bonn.de